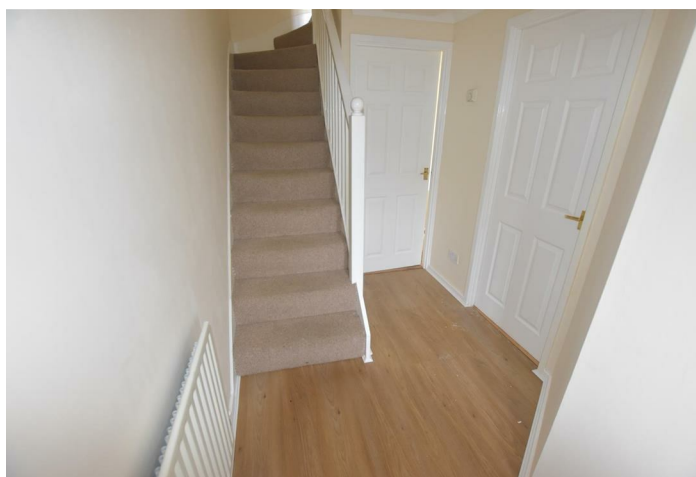




Olympic Way , Kettering NN15 6FZ

- Modern Starter Home
 - Popular Location
- Good decorative Order
- Two Bedrooms
- Off Road Parking
- Available early September

£950 PCM





Location

Description

Lime Tree Lettings are delighted to offer to the market, this much improved, two bedroom starter home. The property is situated on the ever popular leisure village offering good access to the A14, Kettering Station and approximately 1/2 mile from the town centre. Internally it features gas central heating, double glazing and has modern refitted kitchen. Internally there is entrance hall, lounge diner, fitted kitchen. To the first floor there are two bedrooms and a family bathroom. There are two parking spaces to the front of the house and enclosed garden to the rear. Viewing is recommended.



Local Authority Kettering
Council Tax Band B
EPC Rating C

**Lime Tree Lettings & Sales LTD Lettings
Office**
11a Market Street, Kettering,
Northamptonshire, NN16 0AH

Contact
01536 512601
marcus@limetreeagents.co.uk

Agents Note: Whilst every care has been taken to prepare these particulars, they are for guidance purposes only. All measurements are approximate and for general guidance purposes only and whilst every care has been taken to ensure accuracy, they should not be relied upon and potential buyers/tenants are advised to recheck the measurements.